



HERO phase III trial: Results comparing relugolix, an oral GnRH receptor antagonist, versus leuprolide acetate for advanced prostate cancer.

Neal D. Shore *et coll.*

Stéphane Supiot

Oncologie Radiothérapie/ Institut de Cancérologie de l'Ouest, Nantes

Présentation de l'étude

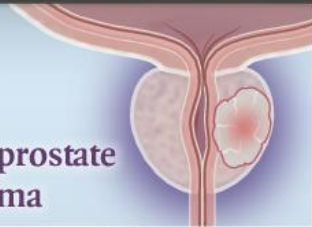
The NEW ENGLAND JOURNAL of MEDICINE

Oral Relugolix for Advanced Prostate Cancer

HERO, A MULTINATIONAL, OPEN-LABEL, PHASE 3, RANDOMIZED TRIAL

930

Patients with prostate adenocarcinoma



Relugolix



N=622



Leuprolide Acetate



N=308

Sustained testosterone suppression

96.7%

88.8%

Difference, 7.9 percentage points; 95% CI, 4.1 to 11.8; P<0.001

Mean testosterone level on day 4

38 ng/dl

625 ng/dl

Mean testosterone level 90 days after treatment discontinuation

**288.4 ng/dl
(137 patients)**

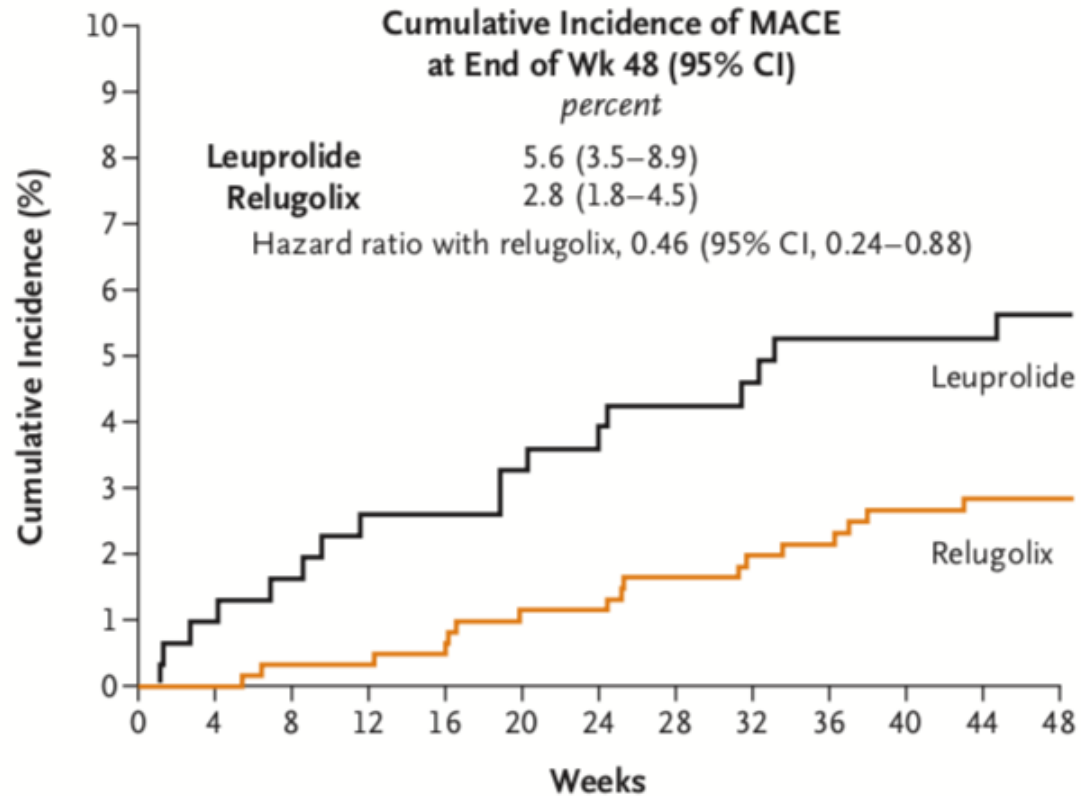
**58.6 ng/dl
(47 patients)**

Oral relugolix was superior to leuprolide injection for rapid testosterone suppression

N.D. Shore et al. 10.1056/NEJMoa2004325

Copyright © 2020 Massachusetts Medical Society

Bénéfice cardiovasculaire



No. at Risk

Leuprolide	308	305	303	298	298	293	292	288	281	279	278	269	259
Relugolix	622	621	616	610	605	596	595	588	582	575	563	559	538

Intérêt et Limites de l'étude

Points positifs

- Castration supérieure agonistes
- Castration rapide
- Récupération testostéronémie rapide après l'arrêt du traitement
- Place du degarelix ?

Points d'interrogation

- Comment contrôler l'observance des patients ?
- Bénéfices cardio-vasculaires = objectifs secondaires; intérêt de l'étude PRONOUNCE